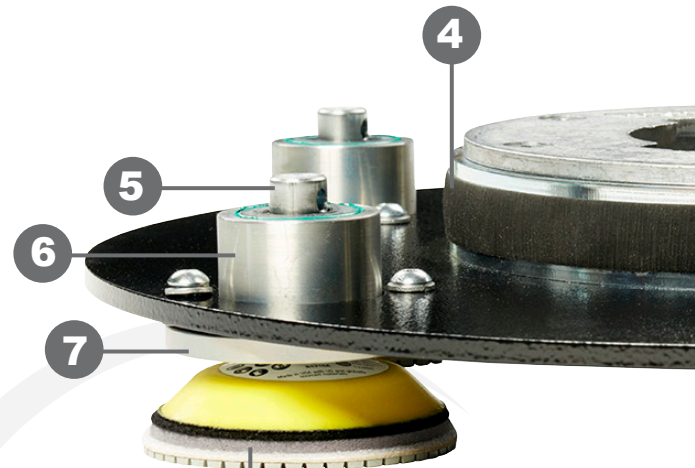
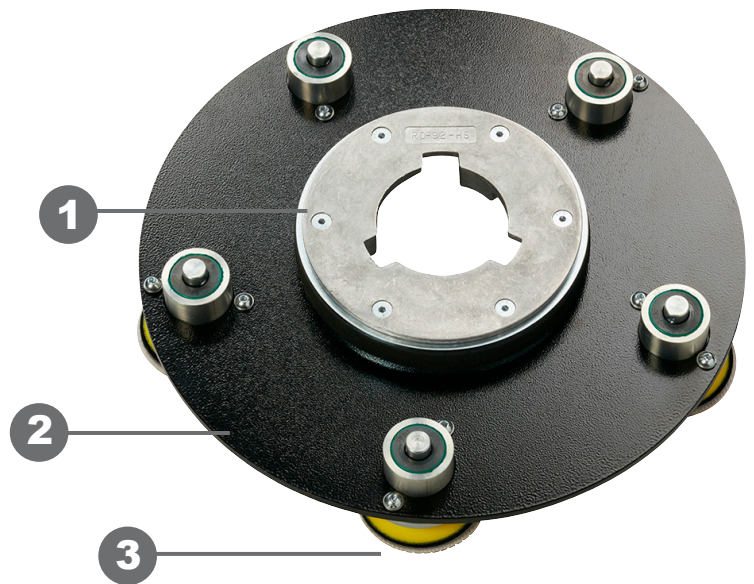


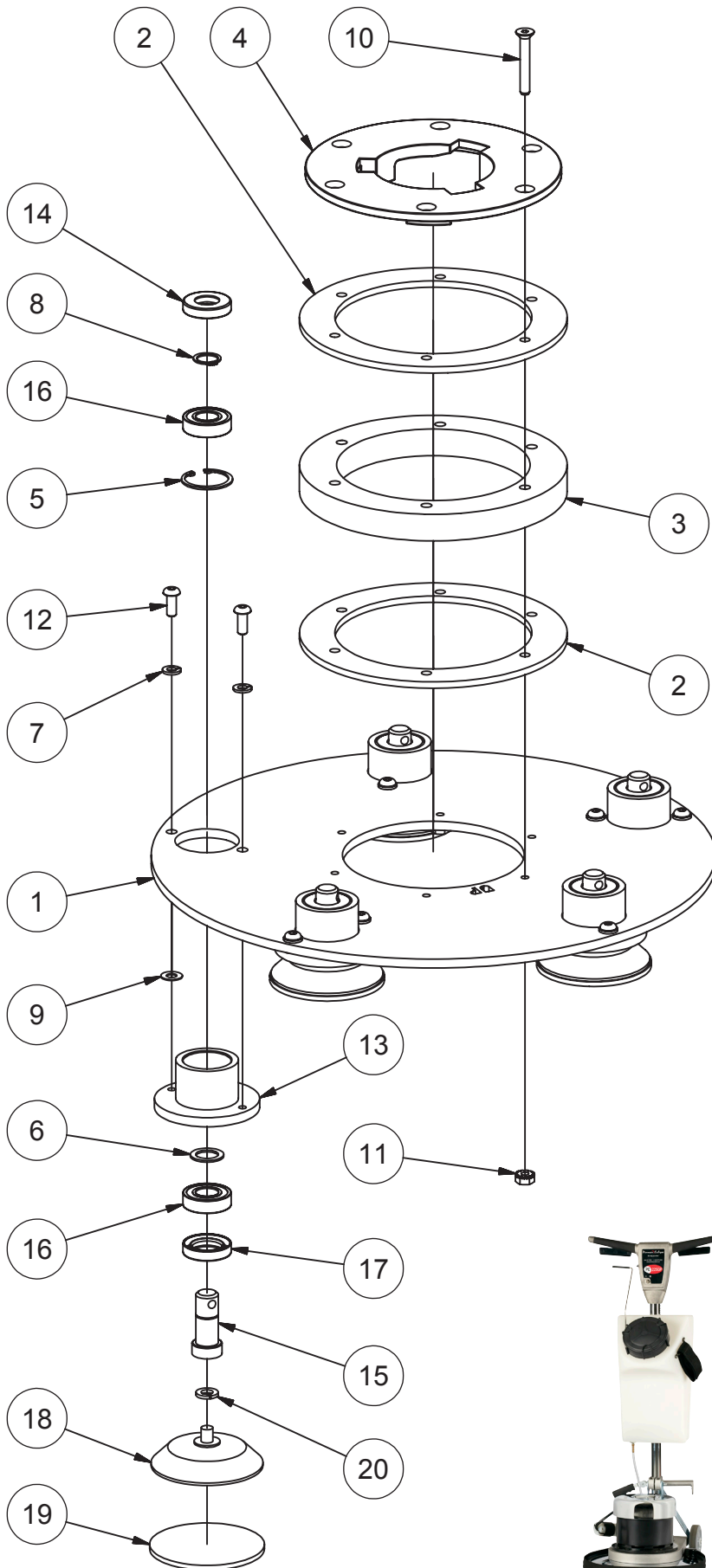
HYDRA SHINE

The **HydraShine** is a cost effective solution for polishing small areas and edges.

- 1 Strong, six-bolt clutch plate construction transfers torque without the use of a plastic coupling.
- 2 Heavy gauge steel plate for durability and aggressiveness.
- 3 Quick diamond replacement with hook and loop attachment.
- 4 Isolator/dampener provides superior handling.
- 5 The raised bearing shaft allows for quick, wrench free, pad removal.
- 6 Double seals to keep concrete out of the bearings.
- 7 Double bearings to ensure smooth rotation.
- 8 Backer pads provide smoother polishing, but may be removed to increase aggressiveness.



HYDRA SHINE



ITEM	QTY	PART #	DESCRIPTION
1	1	MP497500	PLATE, DRIVER
2	2	AS004700	RING, SPACER
3	1	AS004800	RING, ISOLATOR
4	1	AS004600	PLATE, CLUTCH, DRIVER
5	5	747304	RING, RETAINING, INT.
6	5	61355A	SPACER
7	10	NB6110	WASHER, LOCK, 1/4"
8	5	NB070200	RING, RETAINING, EXT
9	5	NB071400	WASHER, GROUND, 1/4"
10	6	NB071300	SCREW, CS, 1/4" X 2"
11	6	NB9845	NUT, KEPS, 1/4-20
12	10	962822	SCREW, BH, 1/4" X 5/8"
13	5	MP497600	HOUSING, BEARING
14	5	MP497300	SEAL, SHAFT, 15MM
15	5	MP497700	SHAFT
16	10	56380282	BEARING, BALL
17	5	MP497400	SEAL, SHAFT, 20MM
18	5	MP497201	PAD, FOAM, 3" DRIVER
19	5	MP498100	ADAPTER, FOAM, 3"
20	5	NB6111	WASHER, LOCK, 5/16"

TECHNICAL DATA

- Part #** SA031900
 - Driver Size** 16" (406 mm)
 - Diamond Size** 3" (76 mm)
 - Weight** 18 lbs (8 kg)
 - Warranty** Parts & Labor - 6 months*
- * Excludes consumable wear items



For optimum results, use with 225GP

